



# Vue-HV Laser Diode Stack Controller

## Compact and powerful



As the applications for laser diode bars and stacks increase, designers face new challenges in their controller system development. New applications in medical, military and semi-conductor markets put greater emphasis on the overall system design. The compact yet powerful Vue-HV is available now to meet these new demands.

### Applications:

- Medical systems
- Solid-state laser pumping
- Materials processing
- Military applications

### Benefits:

- Speed time to market
- Advanced diode safety and monitoring
- Ease of integration and test

### Vue-HV Series Overview

The VueMetrix Vue-HV series of water-cooled laser diode stack controllers are a compact yet powerful solution for demanding OEM applications. With drive currents up to 120A and compliance voltages up to 24V this powerful package incorporates all the required laser diode safety and monitoring features. The compact size of the drive electronics makes the Vue-HV ideal for OEM applications in solid-state laser pumping, materials processing, military and medical systems.

The Vue-HV series of laser diode drivers are computer controlled via RS-232 or USB and come standard with WinVue user interface software. The onboard firmware monitors the operation of the controller and the safety of the laser diode at all times, allowing the Vue-HV to be an embedded part of a larger system or to be the stand-alone system controller. Custom firmware options for OEM customers are available.

With WinVue software the user to do more than just control the laser diode. It is equipped with tools to aid both the researcher in R&D and production engineers in manufacturing. Software tools like data logging with one-click data export, LIV acquisition, power calibration, user-settable power and current limits, and the ability to visualize all control settings are there to help designers shorten the product development cycle.

When its time to incorporate the Vue-HV driver into your system, all of the functions of the user interface software are available through a complete library of RS-232 commands. The Vue-series drivers can also help lower your manufacturing costs by automating system setup and test.

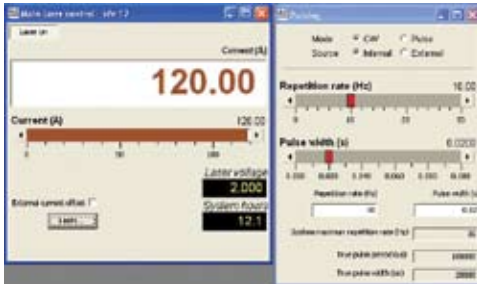
VueMetrix specializes in laser diode control systems – allowing us to design the electronics and freeing you to do what you do best, design the optical system. Our experienced team of hardware and software designers can supply you with cost effective, state of the art controllers.

Talk to us about how VueMetrix controllers can give your product a significant edge.

### Features:

- 5V, 12V, 15V, 18V, or 24V, compliance
- Up to 120A output current
- 190-240 VAC input
- Power factor corrected
- Advanced control and monitoring
- Compact water-cooled design

## Specifications:



WinVue Graphical User Interface

Input	Compliance Voltage & Output Current				
	5.0V	12V	15V	18V	24V
190-240V	120A	100A 120A	80A 120A	55A 110A	50A

Parameter	Specification
Current Set Point Resolution	0.05% FS
Noise/Ripple <sup>1</sup>	<0.15% P-P at max current
Pulse width	250 µs to DC
Pulse rise time <sup>2</sup>	< 100 µs
Trigger	Internal or TTL external
Light Loop Input	0-100 mA
Start-up Characteristics	Soft Start, no turn on spikes
User Interface (included)	VueMetrix WinVue graphical user interface software
Computer Requirements	Windows XP or greater, RS-232 or USB
Dimensions (w x h x l)	5.5" x 6.1" x 15.2"
Output Connector	Bus bar
Water Cooling requirements	1 gpm @10 PSI 15-35oC

Specifications subject to change without notice.

<sup>1</sup> Varies with impedance of load

<sup>2</sup> Longer rise times can be set at the factory. Call for details.



Vue-HV front panel



Vue-HV rear panel

### Company Information:

VueMetrix, Inc.  
 960 Hamlin Court  
 Sunnyvale, CA 94089-1401  
 Telephone: +1 408.734.9974  
 Fax: +1 408.734.7997

Contact us via email:  
[info@vuemetrix.com](mailto:info@vuemetrix.com)

See our website at:  
[www.vuemetrix.com](http://www.vuemetrix.com)