



Vue-MC Multi-Channel Laser Diode Controller



Features:

- 8 Channels at 6A or 4 Channels at 12A
- High compliance voltage option
- Dual optical power monitor inputs per channel
- Multiple units controlled by a single computer

The **Vue-MC** series of multi-channel laser diode controllers is designed to provide stable, low noise drive current for materials processing, burn-in, and pump applications. Available with 8 channels at 6A per channel or 4 channels at 12A per channel, the Vue-MC series offers a reliable, cost effective solution in a compact 1U rack mount package.

Each channel has two independent light level inputs to monitor power or operate in constant power mode.

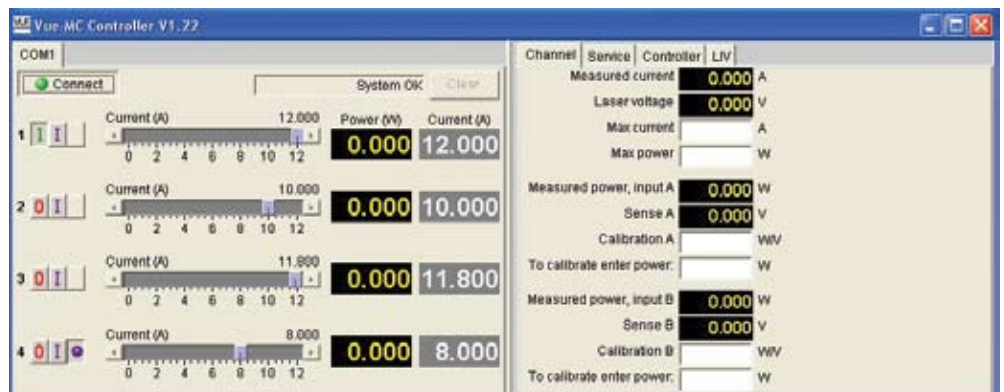
VueMetrix control software is designed to be intuitive and easy to use. Operating in a Windows™ environment the user can easily set operating points, diode current limits or choose between constant current and power modes with the intuitive, menu driven software.

Software Tools to increase user productivity, such as LIV testing and data logging have been included. LIV curves can be generated and exported with a simple click of the mouse. For burn-in applications, the data logging feature allows the user to collect all available parameters at user defined intervals, then export for easy analysis or graphing.

The compact size, on-board intelligence, and intuitive software makes the Vue-MC easy to integrate into distributed pump architecture fiber lasers, multi-diode material processing systems, or in-house burn-in systems. In addition, multiple Vue-MC units can be controlled by a single computer.

For high density burn-in applications the Vue-MC can be ordered with the high compliance option to further reduce the cost per DUT. The high compliance option provides 10 volts per channel.

In addition to the configurations listed, custom OEM versions may be available. Contact VueMetrix to find out why the Vue series is the only controller you'll ever need.



WinMC Software, 4 Channel

Specifications:

Parameter	Vue-MC-806	Vue-MC-412
Maximim Output Current	6 A	12 A
Number of Channels	8	4
Current Set Point Resolution	2 mA	4 mA
Current Accuracy	+/-0. 5% of reading plus +/-0.1A	
Compliance Voltage at Max. Current	3.8 or 10.0 ¹ Volts	
RMS Noise/Ripple ² (20Hz to 500kHz)	<1 mA	
Laser Voltage Measurement	0-4.5 Volts (10 Volts for HC option ¹)	
Laser Voltage Resolution	2 mV (4 mV for HC option)	
Laser Voltage Accuracy	+/-1% plus offset of +/-2 mV (+/-4 mV for HC option)	
Power Sense Input Range ³	0-4 Volts in voltage input mode or 0-2 mA in current input mode	
Power Sense Resolution	2 mV or 1 uA depending on input mode	
Power Accuracy	User calibrated via the user interface	
Output Connectors	Molex 43045-1002 (Output cables included)	
User Interface	VueMetrix WinMC Software, requires Windows™ PC via RS-232	
Computer Requirements (not included)	Windows™ 2000 or greater, RS-232	
Input Power Requirements	90 - 264 VAC, 47 - 63 Hz, 5 Amps (7 Amps for HC option)	
Dimensions (W x H x D)	16.95" x 1.75" x 20.5"	

Specifications subject to change without notice.

1. High compliance option requires at least a 5V drop across an external load for currents exceeding ½ maximum rated output current. Consult Factory for details.
2. Noise specification applies when total output current exceeds 2A.
3. The power sense input is set at the factory to sense either voltage or current. Specify when ordering.



Vue-MC front panel



Vue-MC rear panel

Company Information:

VueMetrix, Inc.
960 Hamlin Court
Sunnyvale, CA 94089-1401
Telephone: +1 408.734.9974
Fax: +1 408.734.7997

Contact us via email:
info@vuemetrix.com

See our website at:
www.vuemetrix.com